

SECTION - 02

SCALPEL HOLDERS / AMPUTATION KNIVES



SCALPEL HANDLES



#4 KNIFE HANDLE
02-001-120
12.75 cm
20, 22, 25



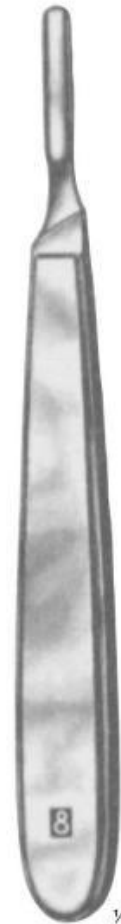
#3 KNIFE HANDLE
02-002-120
12.75 cm
10, 11, 12, 15



#3 KNIFE HANDLE/GRADUATED
02-003-120
12.75 cm
10, 11, 12, 15



SCALPEL HANDLE
02-004-210
21 cm



SCALPEL PLASTIC HANDLE
02-005-08
8



COLLIN #9
02-006-09
9



Fig. 10



Fig. 11



Fig. 12



Fig. 15



Fig. 20



Fig. 22

SCALPEL HANDLES



SCALPEL
PLASTIC
HANDLE
02-007-05
5



SCALPEL
PLASTIC
HANDLE
02-008-06
6



SCALPEL
HANDLE
02-009-160
16 cm



#7 KNIFE
HANDLE
02-010-160
16.5 cm
10, 11, 12, 15



SCALPEL
HANDLE
4L long
02-011-210
21 cm



#3 KNIFE
HANDLE
3L LONG
02-012-120
21 cm
10, 11, 12, 15



#3 KNIFE HANDLE /
LONG ANGLED
02-013-200
20.25 cm
10, 11, 12, 15

SCALPEL HANDLES



SCALPEL
HANDLE
02-014-115
11.5 cm



SCALPEL
HANDLE
02-015-160
16 cm



SCALPEL
HANDLE
02-016-127
12.7 cm



SCALPEL
HANDLE
02-017-110
11 cm



SCALPEL
HANDLE
02-018-127
12.7 cm



SCALPEL
HANDLE
02-019-135
13.5 cm



SCALPEL
HANDLE
02-020-120
12 cm

KNIVES



DIEFFENBACH
16 cm



Fig. 1
02-029-160
16 cm



Fig. 2
02-030-160
16 cm



Fig. 3
02-031-160
16 cm



Fig. 4
02-032-160
16 cm



Fig. 5
02-033-160
16 cm



Fig. 6
02-034-160
16 cm



Fig. 7
02-035-160
16 cm



Fig. 8
02-036-160
16 cm



Fig. 9
02-037-160
16 cm



Fig. 15
02-038-160
16 cm



Fig. 16
02-039-160
16 cm

KNIVES



COLLIN
14.5 cm



Fig. 1
02-040-145
14.5 cm



Fig. 2
02-041-145
14.5 cm



Fig. 3
02-042-145
14.5 cm



Fig. 4
02-043-145
14.5 cm



Fig. 5
02-044-145
14.5 cm



Fig. 6
02-045-145
14.5 cm



DIEFFENBACH
13.5 cm



Fig. 1
02-046-135
13.5 cm



Fig. 2
02-047-135
13.5 cm



Fig. 3
02-048-135
13.5 cm



Fig. 4
02-049-135
13.5 cm



Fig. 5
02-050-135
13.5 cm



Fig. 6
02-051-135
13.5 cm



Fig. 7
02-052-135
13.5 cm



Fig. 8
02-053-135
13.5 cm



Fig. 9
02-054-135
13.5 cm



Fig. 10
02-055-135
13.5 cm

KNIVES



02-056-170
17 cm

¼



¼

Fig. 1
02-057-170
17 cm



Fig. 3
02-058-170
17 cm



Fig. 5
02-059-170
17 cm



Fig. 7
02-060-170
17 cm



Fig. 9
02-061-170
17 cm



¼

Fig. 10
02-062-170
17 cm



Fig. 12
02-063-170
17 cm



Fig. 14
02-064-170
17 cm

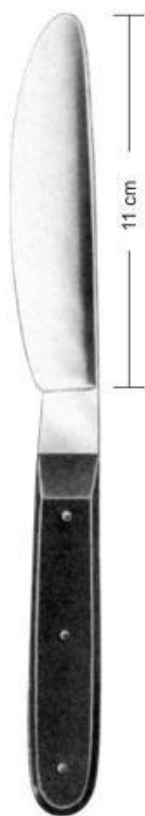


Fig. 16
02-065-170
17 cm

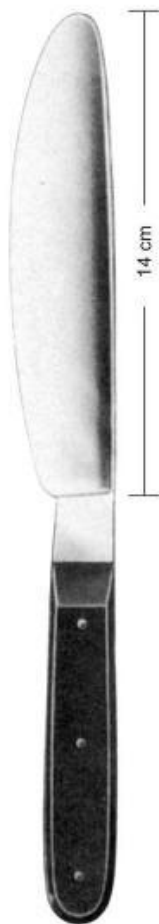


Fig. 18
02-066-170
17 cm

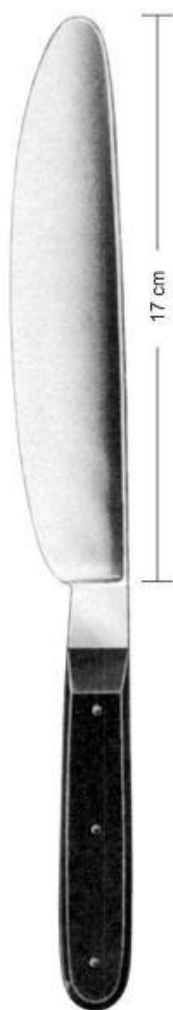
KNIVES



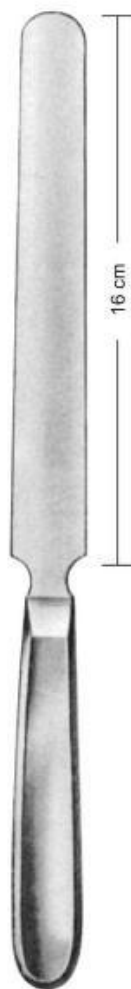
WALB
02-096-05



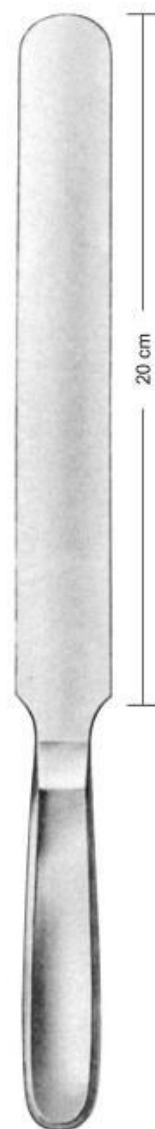
WALB
02-097-05



WALB
02-098-05



VIRCHOW
02-099-05



VIRCHOW
02-100-05



VIRCHOW
02-101-05

AMPUTATION KNIVES & SAWS



¼
AMPUTATION KNIFE
02-102-290
29 cm



¼
AMPUTATION KNIFE
02-103-325
32.5 cm



¼
CATLIN
02-104-290
29 cm



¼
RESECTION KNIFE
02-105-180
18 cm



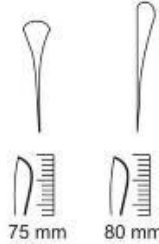
¼
LANGENBECK
02-106-180
18 cm



¼
LANGENBECK
02-107-180
18 cm



¼
02-108-00
Hollow Blades On Both Sides
02-109-00
Blade Flat / Hollow



75 mm

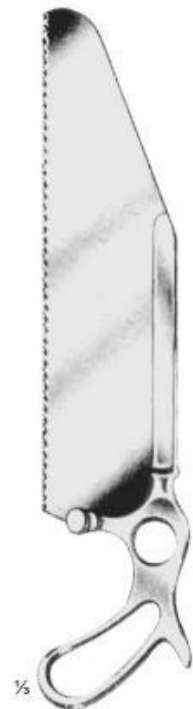
80 mm



¼
CHARRIERE
02-110-270 27 cm
02-111-300 30 cm



¼
CHARRIERE
02-112-350
35 cm



¼
SATTERLEE
02-113-310
31 cm